

WJVintage

August 2023 Newsletter



Welcome to the August 2023 edition of the WJVintage newsletter. It has been another quiet month as we enjoy what sunshine and warmth our UK summers offer us – seems to have been pretty cool and windy around my part of the world for the most part. This is in total contrast to the scorching temperatures we endured in 2022, and also to the temperatures affecting other parts of Europe. If I'm honest, I prefer it cooler these days!

The shows and meetings have also been rather quiet, so I haven't been out and about as much as I'd have liked. However, as is often the case quality often wins over quantity and I really enjoyed my recent trip to Northend for the Cotswold HRCA meeting. My report follows below in the '**Out and About**' feature.

New products have also been thin on the ground of late as we eagerly await the arrival of the H2 'Brighton' Atlantics. They are still a couple of months away and pre-orders are continuing to come in. I have updated the available stock in the '**What's New**' feature and, importantly, I have added some 'expected' delivery dates. I have also updated the '**Brian Edinboro**' Collection with a few new items and a few reduced prices on some of his locos that remain unsold.

As it is summer, I have also included some lovely photographs from Richard Tremaine, which show his beautiful 7¼ inch gauge locos plus some gauge 1 (see also header photo above), all in use outdoors. Take a look at '**Customer Corner**' for details.

Stay Safe &
Keep enjoying your trains

WJVintage

Serious Toys for Discerning Boys

www.wjvintage.co.uk



Out & About



HRCA Cotswolds Goup Meet – Burton Dassett Village Hall, Northend, August 14th.

Organiser Richard Taylor was able to announce that, once again the turnout for this meeting was well in excess of forty members. This group really does seem to be going from strength to strength since its return to Northend – long may it continue!

The theme for the August meeting was 'Branch Lines' and not only was it incredibly well supported, but it was also fantastic, and a little humbling, to see several **WJVintage** models in use – especially as it is really a Hornby Club meeting.



Perhaps not surprisingly, given the Cotswolds location, there was something of an emphasis on Great Western as highlighted by the GWR Railcar No 22, which is the running number of the preserved railcar at Didcot. One of my favourite products that I have launched in recent years must be the 14XX 0-4-2 with Autocoach. I think it's a lovely combination and looks really well in all the schemes. There were two different examples on show at this meet – Great Western and BR (late crest).



Of course, it wasn't all about my products and there was a good offering of other locos being operated as the following photos show.



The Ace Trains 2-6-2 Prairie (above) looked very realistic with a mixed train hauling coal and passengers, as did an Ace 0-6-0 Pannier (below) in GWR shirt button livery with a nice rake of mineral coal wagons.



A Darstaed (I think) 0-6-0 Pannier in British Railways Green continued the Western Region theme.



New, but in the style of one of Hornby's first ever O gauge locos, was this very smart Hornby Centenary Commemorative 2710 in Caledonian Railway livery. Produced by ETS in Prague, it looks very smart with its rake of matching wagons.



Northend is famed for its humorous interpretations of the theme for the day and this meeting was no exception – in fact it was one of the best in my opinion.

With a really professionally made set of decals (made especially for the meeting) this US diesel locomotive proudly presents in the livery of The **Bear River And Nickel Creek Haven Line** – also know as 'The Branch Line'



The loads being hauled were all suitably 'branch/tree' related making a very impressive train indeed – a really excellent effort!

Richard Taylor and his team have really made a great success of this meeting since it transferred back to Northend. It has a wonderful friendly atmosphere, and I would thoroughly recommend it to anyone to pop by if you are in the area. Meetings are always on the 2nd Monday of each month.

Customer Corner



Richard Tremaine, a regular visitor to the HRCA Cambridge Group, and also the Bassett-Lowke Society running days at Digswell, has a very wide range of railway interests. He is also a long-term member of the Cambridge Model Engineering Society and has sent in a couple of photos of their June running day (see above and also as the main header photo of this newsletter). The Society holds a number of public days during the spring/summer but sadly the first two had to be cancelled due to water-logging. Consequently, the June meeting was extremely busy, and the public were treated to both 7¼ inch gauge and gauge 1 in action. These photos show the gauge 1 demonstration track (and also Richard's O Gauge Thomas and Percy which have been hijacked as loads).

Richard's really impressive locomotives are however his two 7¼ inch gauge beauties.



Over the 23rd/24th June Richard had his LNER B2 61671 'Royal Sovereign' and his LMS Black Five 5256 both in steam and burning real coal! They were running at the North Wiltshire Model Engineering Society's Coate Water Miniature Railway, based in Swindon. They may be a tad too big for my garden, but they sure do look impressive pieces of engineering – and of course they tie in nicely with the pieces I have featured recently regarding The Ridgeway Park and the Chingford & District Model Engineering Club (see below). Thank you so much Richard for sharing these superb models with us.

What a Picture

Last month you may recall I shared some photos of a crocheted post box outside the Ridgeway Park, close to where my mum lives. The park is also the HQ of the Chingford and District Model Engineering Club who operate passenger carrying trains in mainly 7¼" and 5" gauge.

Well shortly after I published the last newsletter my brother, whilst out on a regular walk through the park with my mum, was approached by a gentleman who proceeded to tell him about the time the model railway had a surprise visit from an overseas VIP. Somewhat disbelieving, my brother told me about this, and a little googling confirmed that it was absolutely true!

...and here is the picture to prove it.



It was Chingford Day on Saturday July 12, 1952, and some 17,000 people descended upon the Ridgeway Park to celebrate the occasion. Unbeknown to many, one of the visitors who turned up, was none other than Walt Disney, the famous American movie mogul.

Disney was visiting London on business as he sought to promote his recent entry into live-action, non-animated films. He was in fact a massive fan of model trains and boasted his own mile-long railway in the grounds of his California mansion. When he heard by chance that Chingford was home to one of the UK's best model railways at that time, he decided he must take time out from his busy schedule to pay a visit. Disney's suburban adventure was entirely unannounced, and organisers had no idea he would be among the day's visitors. According to some

accounts, Disney arrived just as the mayor of Chingford was set to open festivities. Everyone flocked over to see the Mickey Mouse creator, leaving the poor mayor with a rather depleted crowd.

Very little else is known of the visit but a reporter from the local newspaper managed a quick word with Disney who stated: "This is a very fine layout they have here... I am very interested in these machines, which are quite a bit smaller than those I run in the States."

Thankfully the visit was also captured on camera and **'What a Picture'** it is too!



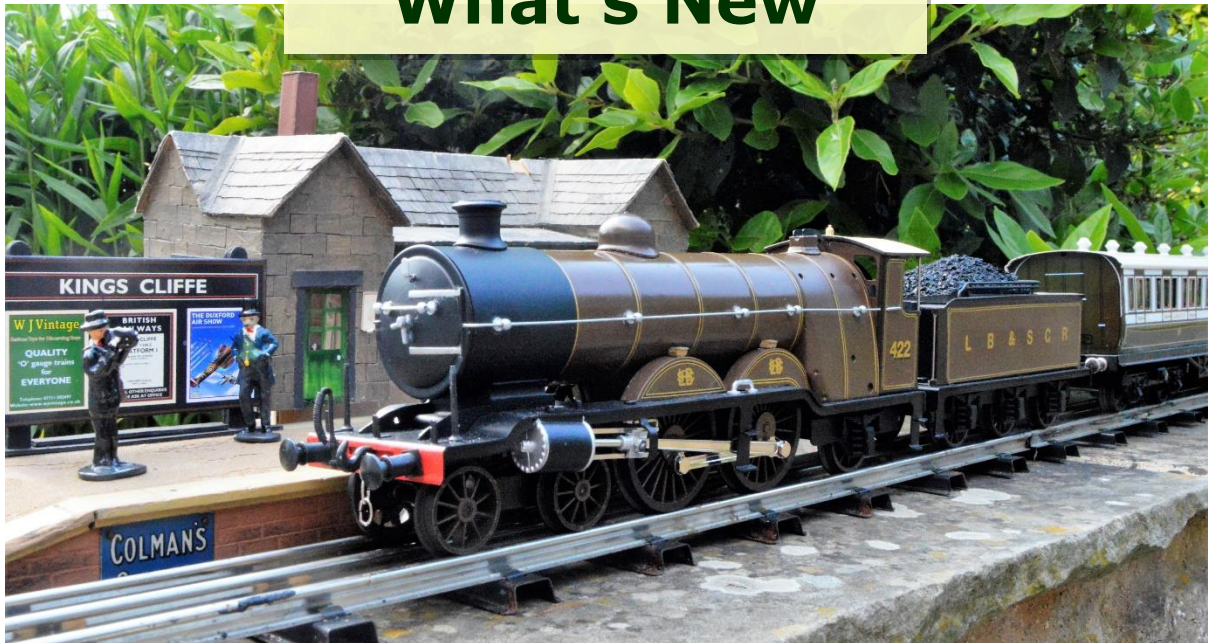
Having featured Marcus Peacock's beautiful (Fred Newman?) Pullman coaches behind his Seven Mill Models LNER B17 Class 'Doncaster Rovers' last month, this photograph kindly submitted by Richard Tremain, really struck a chord with me. It shows a rake of real Pullmans behind LNER C1 'superheated' Atlantic 4442 en route to London's Kings Cross station in May 1936. More details in the photo caption.

What a lovely photograph, and one I have not come across before.

Thanks for sending it in Richard.

Of course, if you'd like to replicate this great looking train, I do still have a few 'superheated' C1s in LNER livery available (See below in **'What's New'**) 😊

What's New



LBSCR H2 4-4-2 'Brighton' Atlantic

Well, since last month the pre-orders for the new H2 'Brighton' Atlantic have continued to roll in, and I now have just 13 pieces to sell. The remaining locos are still very evenly spread with the following still available from each of the liveries:

LBSCR Umber – 3 Pieces

SR Maunsell Green – 4 Pieces

SR Malachite Green – 3 Pieces

BR lined Black – 3 Pieces

The total allocations of each livery are shown in the table below so you will see that the LBSCR Umber livery remains the best seller, closely followed by the SR Maunsell Green.

Thanks to everyone that has placed a pre-order for one of these. Your support during difficult financial/cost of living times is really appreciated. If you haven't seen the prototype in person (and I appreciate that many of you won't have yet) do remember, I have a short clip of the loco in action on my Youtube Page – here is a link:

<https://youtu.be/hiU1XtYIIvg>

Plus you can take a look at it from a few more angles below:





The specification will unsurprisingly be pretty similar to the GNR Atlantic but with one additional key feature – **this version will be 2/3 rail switchable**. Here is the full list of features:

- Precision engineered, (7mm to the foot) O gauge model.
- Hand-built tinplate construction.
- Beautifully tampo-printed authentic liveries.
- 2/3-rail switchable.
- Includes ON/OFF isolating switch.
- 10–14 Volts DC operation.
- Twin motors with super-smooth clutch drive mechanism.
- Fitted with standard Bassett-Lowke/Ace style couplings on tender.
- All-metal construction
- Suitable for minimum radius 27-inch (686mm) curves.
- Will run on raised centre third track.



Production numbers are going to be kept pretty low and my allocation across all liveries will be just **75 pieces** so I would advise early ordering to avoid disappointment.

The planned liveries/quantities/deliveries are as follows:

Livery	WJVintage	
	Allocation	Expected
LB&SCR lined Umber	30	October/November
SR lined Maunsell Green – ‘Trevose Head’ and ‘The Needles’	25	December/January
SR lined Malachite Green – ‘South Foreland’	10	February
BR (early crest) lined Black – 32424 ‘Beachy Head’	10	March

Expected dates are estimates based on current production info. We will do our best, but these can slide due to any number of unforeseen delays. We also reserve the right to amend these allocations according to demand but the total quantity produced will remain 150 total with just 75 pieces allocated to **WJVintage**

Below are some images found on the internet to show how the Southern and BR liveries will look.

Lined Maunsell Green



Lined Malachite Green



BR Lined (early crest) Black



The superb H2 Atlantics are scheduled to start arriving from October 2023 and the prices will be a little more than the previous GNR examples. The cost for the 'Brighton' Atlantics is anticipated to be **£750.00** each plus P&P.

Note - We will do everything we can to maintain this price but if there are serious cost fluctuations between now and production, we do reserve the right to review pricing and will advise all customers as quickly as possible.

Please get in touch to pre-order/express interest in any of the 'Brighton' Atlantics and I will take your details. Progress updates will be available via this newsletter over the coming months.

...Still available - C1 Atlantics

I do still have a few of the C1 Atlantics left in just two schemes
LNER (superheated) BR (superheated)



9 remaining



4 remaining

As you can see, these are now in very limited quantities and are priced at **£695.00** each plus P&P

Graham Lock Figures

I am still taking orders for Graham's lovely figures. The latest is Isambard Kingdom Brunel and there is also WJ Bassett-Lowke.

Cast in white metal, then beautifully hand painted in a traditional style gloss finish, these lovely, collectable pieces are also supplied in superb

period style 'Graham Lock' and 'Bassett-Lowke' branded boxes. Overall height of Brunel figure is 49mm (approx.) Lowke 47mm (approx.)



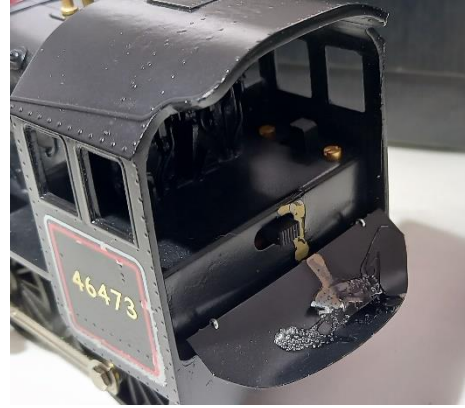
Priced at just **£11.00** each plus P&P, Graham will make these to order so please let me know if you would like one and I will get him working on them. I would anticipate a lead time of around 2 weeks given the labour-intensive nature of these pieces. It also sometimes depends on how soon I will next see him to take delivery, or whether he will post them.

The Brian Edinboro Collection

Seven Mill Models Ivatt 2-6-0, Class 2 'Mickey Mouse' – 46473 BR (early crest) lined black

This loco is also presented in excellent condition **with the exception of** the fall plate. For some reason it has been glued in the up position and bent slightly, presumably to keep it out of the way. I have returned it to its normal pivotable state, but it has left a little damage from the glue. It is a fairly easy fix and hardly noticeable when running but it needs to be considered and I have shown it in the photos below.





The box is in good condition and the instructions are present.
The price is now **£525.00** plus P&P which is a considerable saving over a new one (RRP £675.00)

Bassett-Lowke (Corgi) J39 Class 0-6-0 – 64757 BR (late crest) unlined black



This locomotive has been well used as you will see from the photo of the pick-up spoons below. As such it is not offered in pristine condition, but it is nevertheless a very good, very useable locomotive and is, I think, priced accordingly at **£250.00** plus P&P.

The box is in very good condition too and the instructions are present.
There is a smoke unit fitted but this has not been tested.



WJVintage C1 Atlantic 4-4-2 – 62822, British Railways unlined black



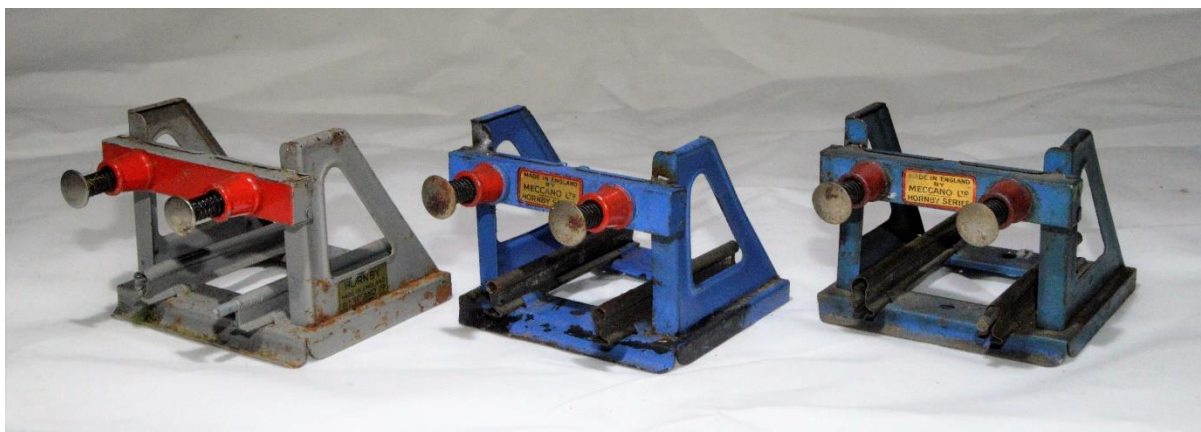
This is quite a difficult one for me. I wasn't expecting to be selling a used Atlantic whilst I still have new ones available! As you can imagine this loco is not very old and has seen very little running. It presents in almost 'as new' condition, as does the box – instructions included.

Now priced at **£625.00** plus P&P so a good discount from the 'brand new' price.

Hornby Buffers – Set of 3

Set of 3 Hornby Buffers in reasonable condition. The sprung buffers work well on all 3 and all have decals in reasonable condition. For overall condition see photos (one has had tabs soldered, one is missing a connecting pin).

Bargain price of **£10.00** plus P&P the lot!



Dinky 190 Caravan Cream/Blue



Produced between 1956 and 1960 this caravan is in nice, play-worn condition with a few paint chips as can be seen in photos. The tow hook is complete, and the jockey wheel is in place. Tyres both look to be in good condition. Price **£5.00** plus P&P

Dinky 965 Euclid Rear Dump Truck

Produced between 1955 and 1961 this truck is in playworn condition but the tipping action works well and it is all complete. The rear axle is bent slightly but it still displays well and rolls freely (with slightly wonky wheels). Price **£7.50** plus P&P



Corgi 1:50 Scale Utility Bus – Aberdeen Corporation Transport



Excellent, unmarked all-round condition. No mirrors fitted.

Price **£7.50** plus P&P

Cararama/Oxford Diecast Volvo FH12 1:50 Scale Low Loader Rawcliffe & Sons

This truck comes boxed and is in very good used/displayed condition. Box is also in good condition with slightly dusty window.

This looks great with a Volvo Digger as a load (sold separately see below)

Price **£15.00** plus P&P





Motorart Volvo EC280 1:50 Scale Excavator

This is a very nicely detailed model in good condition and in great working order (tracks revolve, jib arm and bucket are fully articulated, and the body rotates). It is very much a collector model rather than a toy but does not come with box. It looks great on the Volvo low loader (sold separately see above).

Price **£20.00** plus P&P



Maisto Articulated Tractor Digger/Plough

In contrast to the above, this is much more of a toy and actually has a friction motor which seems to have a slipping clutch so doesn't run too well. It is all complete and will display well after a bit of a clean.

Price **£5.00** plus P&P



See us at Shows

Here we have a comprehensive schedule of events going forward as far as the end of 2023. With rising fuel costs and a general decline in spending with cost-of-living rises, I have reduced my travelling to some of the general Toy Fairs and I am focussing instead on the Model Railway club meets and shows. I look forward to seeing as many of you as possible over the coming months. **Do check back on these dates with each newsletter as I have already had to add, subtract or alter some events and may continue to do so as necessary.**

Saturday September 9th – Sandown Park (Barry Potter Fairs)

Sandown Exhibition Centre, Sandown Park Racecourse, Portsmouth Road, Esher, Surrey, KT10 9AJ - 10:30am to 3:00pm

NOTE: Unfortunately, I will not be able to attend this Sandown Show. I will definitely be at the next Sandown in November

Saturday September 16th - Bassett-Lowke Society Running Day, Digswell

The Cowper Arms, 31 Station Road, Digswell, Welwyn, Herts, AL6 0EA – 10:30am to 3:30pm

Please note The Cowper Arms is next to Welwyn North Station

Tuesday September 26th – HRCA Cambridge Group

Fulbourn Village Library, The Swifts, Haggis Gap, Fulbourn CB21 5HD
5:30pm to 9:00pm

Saturday October 28th - Yorkshire, Vintage Toy, Tinplate and Live Steam Railways Fair 2023

Eccleshill Mechanics Institute, 93B Stone Hall Rd, Bradford BD2 2EW – 10:00am to 4:30pm

Saturday November 11th – Sandown Park (Barry Potter Fairs)

Sandown Exhibition Centre, Sandown Park Racecourse, Portsmouth Road, Esher, Surrey, KT10 9AJ - 10:30am to 3:00pm

Saturday December 16th - Bassett-Lowke Society Running Day, Digswell

The Cowper Arms, 31 Station Road, Digswell, Welwyn, Herts, AL6 0EA – 10:30am to 3:30pm Please note The Cowper Arms is next to Welwyn North Station



Don't forget to like our WJVintage Facebook Page

With close to 600 Facebook 'likes', the WJVintage page is almost as popular as this newsletter! That said, many subscribers on Facebook are associates, friends and family with a passing interest in what I get up to – so not my key target audience. 😊 However, it keeps growing and all the latest news is often seen on Facebook before it appears in the newsletter as updates can be done instantly rather than monthly. If you are a member of Facebook, why not look us up and give us a 'like'?



Plus, remember our 'YouTube' Channel!

I have to confess, after a good start, the channel has been quiet for a while but the most recent post is a rather nice video of the prototype LBSCR H2 Atlantic running.

I am hoping that there will be more to come in future.

Ordering from WJVintage is Easy Online

Please use the **WJVintage** website as a shop window and then place your order by using the dropdown menu on each product page to select and submit the item you wish to purchase. This automatically sends me your details and I will be in touch to confirm your requirements and take payment. Alternatively select what you want and then give me a call or email me. Whichever method you use I will get back to you asap and I can confirm stock, particularly for highly limited items, and postage options. Please see below for full contact details.

Credit Card

We have a credit/debit card facility, so you can telephone and place your order with us by calling **07711 092497** – please have your card to hand when calling.

Cheque

If you would prefer to pay by cheque, that is no problem either. Just download the order form from our website and complete your requirements. Then make a cheque out for the total and post both order form and cheque to us at the address shown. Please make cheques payable to **WJVintage**.

Email

Alternatively, you can place your order by email and payment can then be made either by card, PayPal, direct bank transfer or cheque. Please note our email address is: wjvintage@outlook.com

BACS

A growing number of customers are now choosing to send money direct to my account by BACS transfer. If you would like to use this method, please contact me and I will send you my bank account details.

Stay Safe Everyone!

Paul

WJVintage

Tel: 07711 092497

www.wjvintage.co.uk

